



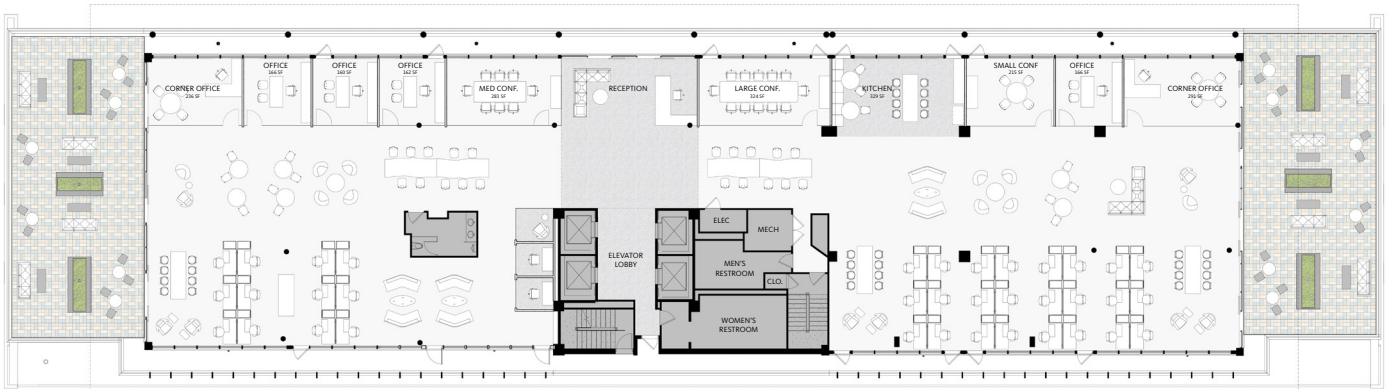
Meadows Building

at **ENERGY
SQUARE**

**Honor the Past
with a Space
Designed for
the Future.**

Enjoy the exceptional views from the fully furnished penthouse balconies. Take a relaxing break in the visual styling of a mid-century modern lobby. The unique design of this space which includes 12,218 SF office space and an exclusive 5,701 SF balcony is made to attract the most creative minded tenants.

Vision Mid-Century Classic Architecture Meets Contemporary Open Concept & Outdoor Living



Exclusive top floor
single tenant space

Two private balconies
with dramatic views

Direct access to
DART Light Rail



Historically
unique building

Prime visibility directly
from Central Expy

Dedicated
monument signage

energysquaredallas.com
For leasing call 214.438.6100

