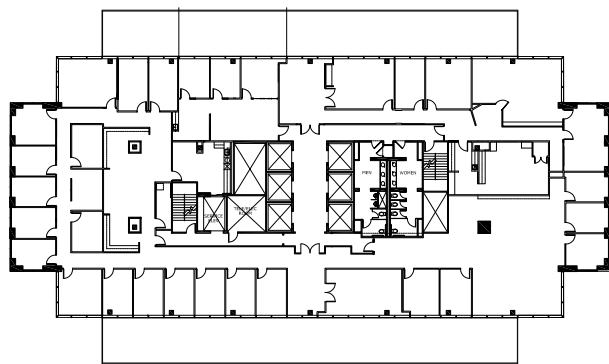


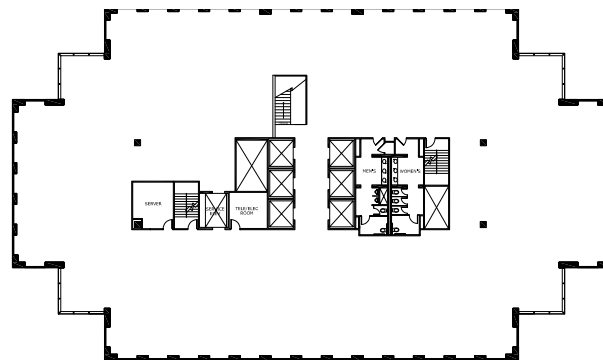


# The Best Things Come in 3s!

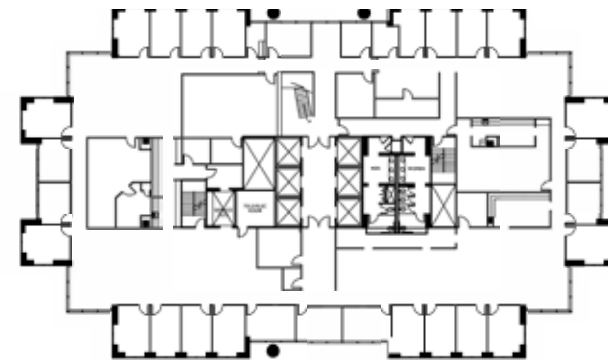
3 FULL FLOORS AVAILABLE AT ENERGY SQUARE 3



16th Floor | 16,160 SF

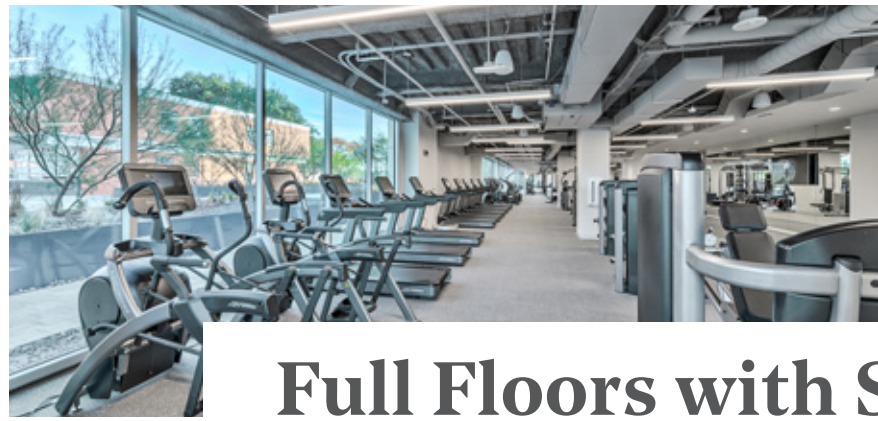


15th Floor | 21,149 SF  
*WHITEBOXED*



14th Floor | 20,255 SF





# Full Floors with Stunning Views of SMU, Park Cities & Uptown

**CROWN SIGNAGE VISIBLE FROM CENTRAL EXPRESSWAY**

At Energy Square, we're more than a group of office buildings connected by a name. We are a connected community, designed for innovators by innovators. Energy Square is focused on engaging experiences with wellness options, flexible and functional spaces, and cohesive campus design all while integrating with nature.

**10,000 SF FITNESS | CONFERENCE CENTER | NEW LOBBIES | CAMPUS WI-FI  
CENTRAL PARK WITH FIREPIT AND OUTDOOR DECK | NEW BUILDING DELIS | GRUB BURGER BAR**

**Newly  
Renovated,  
State-of-the-Art  
Campus**

**41,404 SF  
Available with  
Connected  
Staircase**