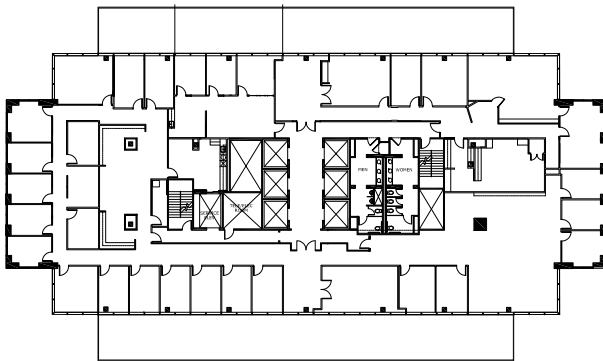


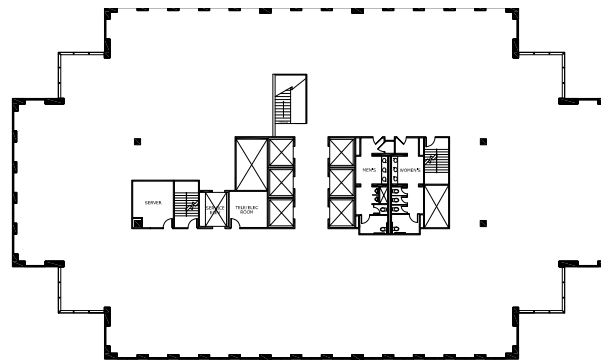


The Best Things Come in 3s!

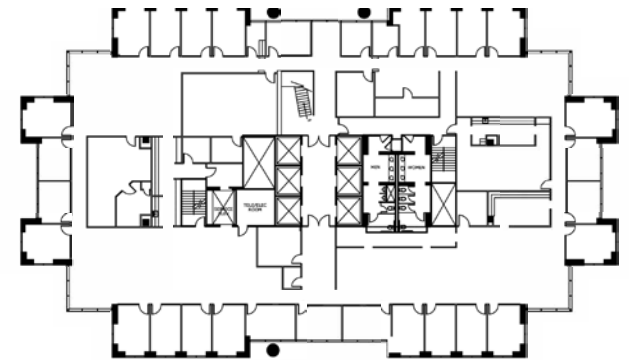
3 FULL FLOORS AVAILABLE AT ENERGY SQUARE 3



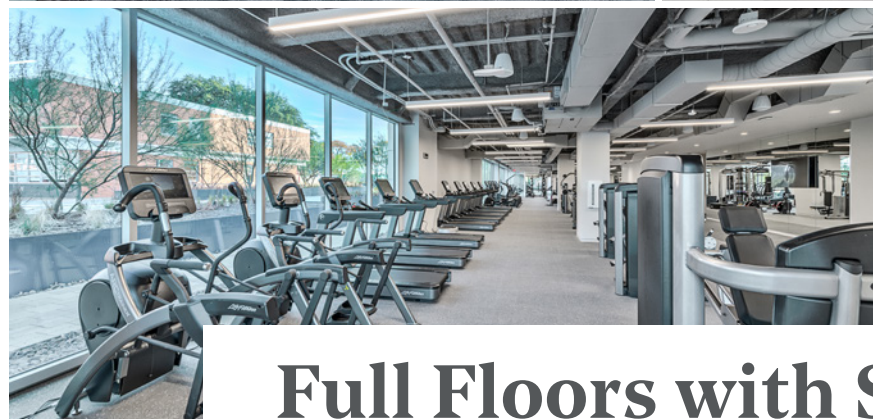
16th Floor | 14,872 SF



15th Floor | 19,706 SF
WHITEBOXED



14th Floor | 18,861 SF



Full Floors with Stunning Views of SMU, Park Cities & Uptown

CROWN SIGNAGE VISIBLE FROM CENTRAL EXPRESSWAY

At Energy Square, we're more than a group of office buildings connected by a name. We are a connected community, designed for innovators by innovators. Energy Square is focused on engaging experiences with wellness options, flexible and functional spaces, and cohesive campus design all while integrating with nature.

**10,000 SF FITNESS | CONFERENCE CENTER | NEW LOBBIES | CAMPUS WI-FI
CENTRAL PARK WITH FIREPIT AND OUTDOOR DECK | NEW BUILDING DELIS | GRUB BURGER BAR**

**Newly
Renovated,
State-of-the-Art
Campus**

**53,439 SF
Available with
Connected
Staircase**



BLAKE SHIPLEY | HALEY HULLETT | JEFF ECKERT

214-438-6100
energysquaredallas.com

4925 Greenville Ave.
Dallas, Texas 75206